

Item Code: TATEX11013

Sponge Rubber

Suitable for underfloor heating*

Suitable for the floating installation of laminate and solid timber floors

Standard Specifications**	
Nominal square weight	2545 g/m ² (75 oz/yd ²)
Nominal roll weight	38.3 kg
Nominal roll area	15.07m ² (1.37m x 11.00m)
Nominal thickness	3.60 mm (0.14")

BS 5808: 1991 / EN14499 : 2015	
Mean original thickness from nominal thickness (Max.12%)	1.2 %
Difference between max. & min. original thickness (Max.3mm)	0.3 mm
Work of compression (Min. 50 J/m ² Max. 200 J/m ²)	57 J/m ²
Retention of work of compression (min 40%)	79 %
Compression after dynamic loading	2.2 mm
Breaking strength (length/width) min. 30N	242N / 106N
Extension under force (length/width) max. 15% @ 30N	0.5% / 0.6%
Loss in thickness after dynamic loading (max 15%)	4.7 %
Loss in thickness after static loading (max 15%)	7.7 %

Flammability	
Hot metal nut test (Not greater than 50mm)	Low radius of effects of ignition
Anti Flammability	Grade Level 1
Reaction to fire classification	Cfl-s1

Electrical Resistivity	
Vertical resistance, 25% RH	>10.0 x 10 12 ohms
Horizontal resistance, 25% RH	>5.0 x 10 14 ohms/cm ²
Vertical resistivity, 25% RH	>9.0 x 10 13 ohms/cm ²
Horizontal resistivity, 25% RH	>10.0 x 10 12 ohms

Barrier Properties	
Moisture resistance (g/m ² /24hrs@38°C/90%RH)	Typical Value: 1.5

Acoustic Sone wood/laminate flooring test	
Drum sound emission (overall loudness) (Sone)	56
Impact sound reduction (Delta Lw)	23 dB

Other Specifications	
Odour	No objectionable odour
Antimicrobial and mildew resistant	Yes
Colour / backing	Green / silver printed Vapourstop membrane
Packaging	Printed film, with printed insert
Thermal resistance	0.55 togs
Emissions (US Carpet & Rug Institute)	Meets low VOC emission criteria Certified GLP051 Cat CC10 Rubber

GREEN CREDENTIALS		
Green Features	Description	LEED Programme
Recyclable	At the end of the underlays useful life it can be 100% recycled	MR 2.0: Points Available It can be recycled
Recycled Content	Contains not less than 3% pre-consumer recycled material	MR 4.0: Points Available Recycled Content
Indoor Air Quality	Meets or exceeds the industry standard for indoor air quality as established by the CRI Green Label Programme	IEQ 4.3: Points Available Product is Green Label Certified
Regional Materials	Production Facility Haslingden BB4 4LS, UK Where used within 500 miles of Production Facility	MR 5.0: Points Available

LEED points must be considered along with other building components and must be determined by the specifier/architect or LEED accredited professional

* When installing underfloor heating please consult manufacturer's instructions regarding suitable tog ratings for their system. Not suitable for use with electric heating mats on top of a structural floor.

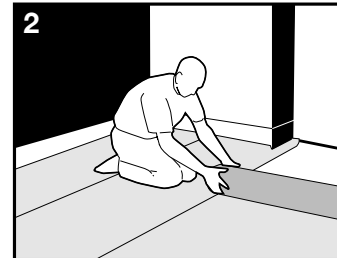
** The nominal roll dimensions have been quoted. These may vary slightly but will comply with the requirements of BS EN 14499:2015

Interfloor Limited strives to improve its product quality and reserves the right to change specification without notice.

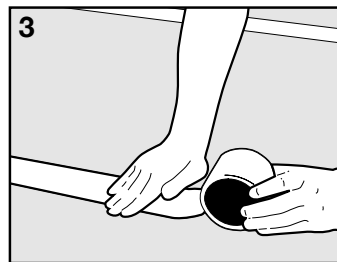


The sub-floor must be level sound, dry and free from dust, grease and other contaminants.

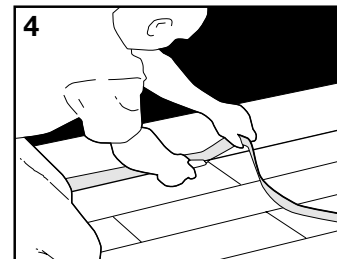
Any loose floorboards must be nailed down and any protruding nails hammered down.



The underlay should be laid foil side up allowing a 5cm excess of underlay to run up the perimeter wall. Each roll of underlay should be closely butted-up.

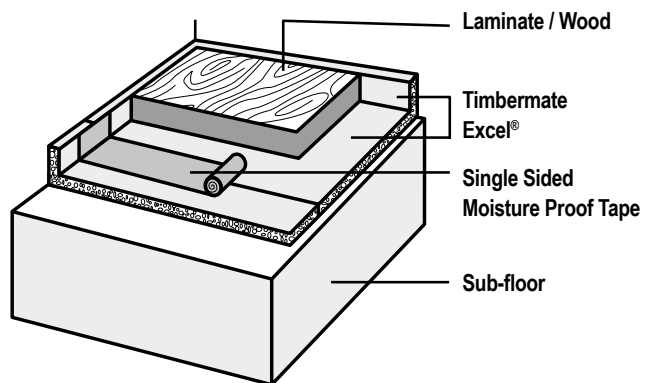


Tape all joints with a suitable single sided moisture proof tape† and press firmly into place.



Once the Laminate or Wood flooring has been fully laid, trim the underlay around the perimeter of the room flush with the flooring, fit skirting or quadrant to finish.

† Single sided moisture proof tape (Vapour Tape 6450) used in conjunction with the underlay, creates a new, moisture-resistant sub-floor onto which the wood or laminate flooring is fitted (in accordance with the manufacturer's recommendations).



Duralay®

Underlay Experts Since 1952

16/ 03/ 2021

Interfloor Ltd
Broadway, Haslingden,
Rossendale, Lancashire,
BB4 4LS

Sales Tel: +44 (0)1706 238810
www.interfloor.com

International T: +44 (0)1706 238825
international@interfloor.com

Estillon B.V.
Linie 25, 5405 AR UDEN
The Netherlands

Tel: +31 413 427427
www.estillon.com
Estillon is part of Interfloor Group Ltd.

Underlay Technical Specification

Item Code: TATXL14668

Issue Date: 04/03/2021

Issue No. 9



Sponge Rubber

Suitable for the floating installation of laminate and solid timber floors

Suitable for underfloor heating. We do not recommend an underlay is used with an electric mat (or dry) underfloor heating system

Standard Specifications*

Nominal square weight	2545 g/m ² (75 oz/yd ²)	
Nominal density	707 kg/m ³	
Nominal roll weight	25.6 kg	
Nominal roll area	10.00m ² (0.685m x 14.60m)	
Nominal thickness	3.60 mm (0.14")	ISO 1765

BS 5808: 1991 / EN14499 : 2015

Mean original thickness from nominal thickness (Max.12%)	1.2 %	ISO 1765
Difference between max. & min. original thicknesses (Max.3mm)	0.3 mm	ISO 1765
Work of compression (Min. 50 J/m ² Max. 200 J/m ²)	57 J/m ²	BS 4098 & ISO 2094
Retention of work of compression (min 40%)	79 %	BS 4098 & ISO 2094
Compression after dynamic loading	2.2 mm	BS 4098 & ISO 2094
Breaking strength (length/width) min. 30N	242N / 106N	EN ISO 13394 BS 2576
Extension under force (length/width) max. 15% @ 30N	0.5% / 0.6%	EN ISO 13394 BS 2576
Loss in thickness after dynamic loading (max 15%)	4.7 %	BS 4052 & ISO 2094
Loss in thickness after static loading (max 15%)	7.7 %	ISO 3415/3416 & BS 4939

Flammability

Hot metal nut test (Not greater than 50mm)	Low radius of effects of ignition	BS 4790 & BS 5287
Anti Flammability	Grade Level 1	CNS7614
Reaction to fire classification	Cfl-s1	Tested to ENISO9239-1 & 11925-2, rated to EN13501-1
Russian GOST FR Test	Classification KM5	

Electrical Resistivity

Vertical resistance, 25% RH	>10.0 x 10 12 ohms	BS 6654	Vertical resistance, 65% RH	>10.4 x 10 8 ohms	BS 6654
Horizontal resistance, 25% RH	>5.0 x 10 14 ohms/cm ²		Horizontal resistance, 65% RH	>2.7 x 10 8 ohms	
Vertical resistivity, 25% RH	>9.0 x 10 13 ohms/cm ²		Vertical resistivity, 65% RH	>5.2 x 10 10 ohms/cm ²	
Horizontal resistivity, 25% RH	>10.0 x 10 12 ohms		Horizontal resistivity, 65% RH	>2.4 x 10 9 ohms/cm ²	

Certification



Guarantee

Guaranteed for the serviceable lifetime of the flooring.

Notes

* The nominal roll dimensions have been quoted. These may vary slightly but will comply with the requirements of BS EN 14499:2015

Underlay Technical Specification

Item Code: TATXL14668

Issue Date: 04/03/2021

Issue No. 9



Barrier Properties

Moisture resistance (g/m ² /24hrs@38°C/90%RH)	Typical Value: 1.5	ASTM F1249
--	--------------------	------------

Acoustic Sone wood/laminate flooring test

Drum sound emission (overall loudness) (Sone)	56	EPLF-Norm 021029-1
Impact sound reduction (Delta Lw)	23 dB	BSEN ISO 140-8: 1998 and BSEN ISO 717-2: 1997

Other Specifications

Odour	No objectionable odour	
Antimicrobial and mildew resistant	Yes	
Colour / backing	Green / silver printed Vapourstop membrane	
Packaging	Clear, with printed insert	
Thermal resistance	0.55 togs	BS 4745
Emissions (US Carpet & Rug Institute)	Meets low VOC emission criteria Certified GLP051 Cat CC10 Rubber	US CRI Green Label Plus Programme

GREEN CREDENTIALS

Green Features	Description	LEED Programme
Recyclable	At the end of the underlays useful life it can be 100% recycled	MR 2.0: Points Available It can be recycled
Recycled Content	Contains not less than 3% pre-consumer recycled material	MR 4.0: Points Available Recycled Content
Indoor Air Quality	Meets or exceeds the industry standard for indoor air quality as established by the CRI Green Label Programme	IEQ 4.3: Points Available Product is Green Label Certified
Regional Materials	Production Facility Haslingden BB4 4LS, UK Where used within 500 miles of Production Facility	MR 5.0: Points Available

LEED points must be considered along with other building components and must be determined by the specifier/architect or LEED accredited professional

Certification



Guarantee

Guaranteed for the serviceable lifetime of the flooring.

Notes

* The nominal roll dimensions have been quoted. These may vary slightly but will comply with the requirements of BS EN 14499:2015